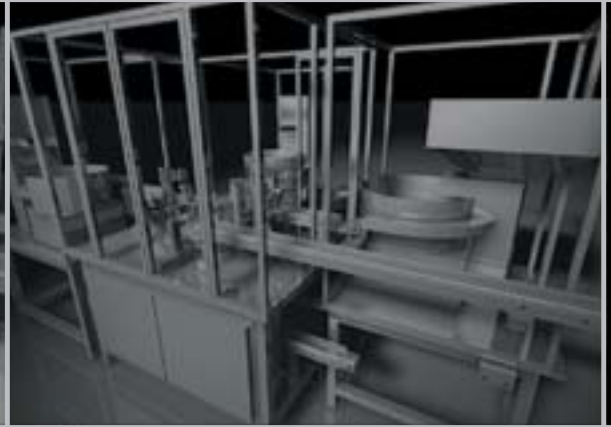
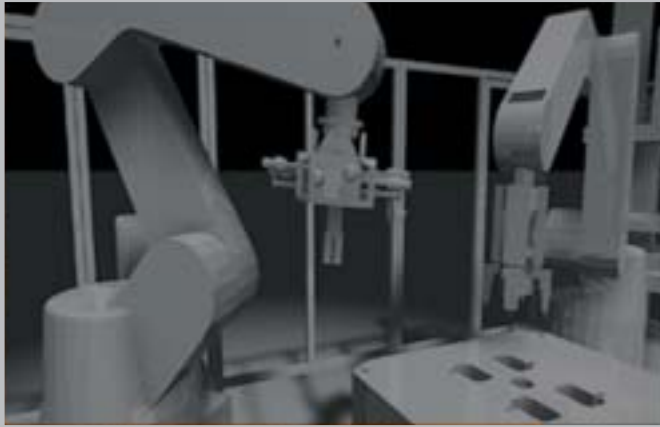


# ONEX

automation

B u i l t T o S e r v e



Increased Production — ○

Improved Quality — ○

Increased Uptime — ○

**ONEX**  
automation

## **History and Promise**

ONEX Automation was established in 1991. We started as a consulting company helping companies with small assembly machine, control system design and programming. Since 1996 ONEX Automation is involved in building turnkey automated assembly and inspection systems.

ONEX Automation can act as an extension to your company's engineering department. Our engineers will meet with your staff throughout the design process to achieve the best engineering solutions in an efficient and timely manner.

Our strength is in our team knowledge. At ONEX Automation each engineer is qualified to design mechanical, electrical systems and perform programming.

Offering accurate, detailed and concise system documentation to customers is one of our highest priorities. Each machine leaves ONEX Automation with its customized operating manual carefully prepared by our dedicated document control personnel.

Our experienced technical support group is scheduled to visit customers quarterly to provide Preventative Maintenance on the machines built by ONEX Automation. With this service we make sure that our machines operate properly and have a long useful life.

Our ultimate goal is to provide you with premium service found only at ONEX Automation.

# Why ONEX Automation?

Service



"To give service you must add something which cannot be bought or measured with money, and that is sincerity and integrity."

**DONALD A. ADAMS**

**ONEX**  
automation



**Customer Service is important. ONEX Automation provides its customers with the highest level of service second to none in the Industry.**

Customer Service is important. Each company tries to differentiate itself from its competitors by producing products and by supporting these products with services that are essential for the end users. In addition to producing well-designed and well-built automated assembly systems, ONEX Automation provides its customers with the highest level of service second to none in the Industry:

- Highly detailed system documentation
- One full year of preventative maintenance at no cost
- Training seminars in cooperation with leading manufacturers of factory automation products

### **Of Interest to Engineers: Detailed System Documentation**

ONEX Automation provides all of its customers with detailed, well-referenced, and useful system documentation. All ONEX Automation customers know exactly what components were used in the building of their system:

- Complete assembly drawings
- Electrical wiring diagrams
- Program lists
- Complete bill of materials

### **Of Interest to Managers: Extremely Low Downtime**

Some downtime is to be expected of any automated system. However, starting with good design and using first-rate components this can be minimized. ONEX Automation goes further by furnishing complimentary, on-site preventative maintenance in the form of quarterly visits by an ONEX Automation engineer. We make sure that your equipment is operating properly and prevent downtime before it happens.

### **Of Interest to Executives: A Competitive Advantage**

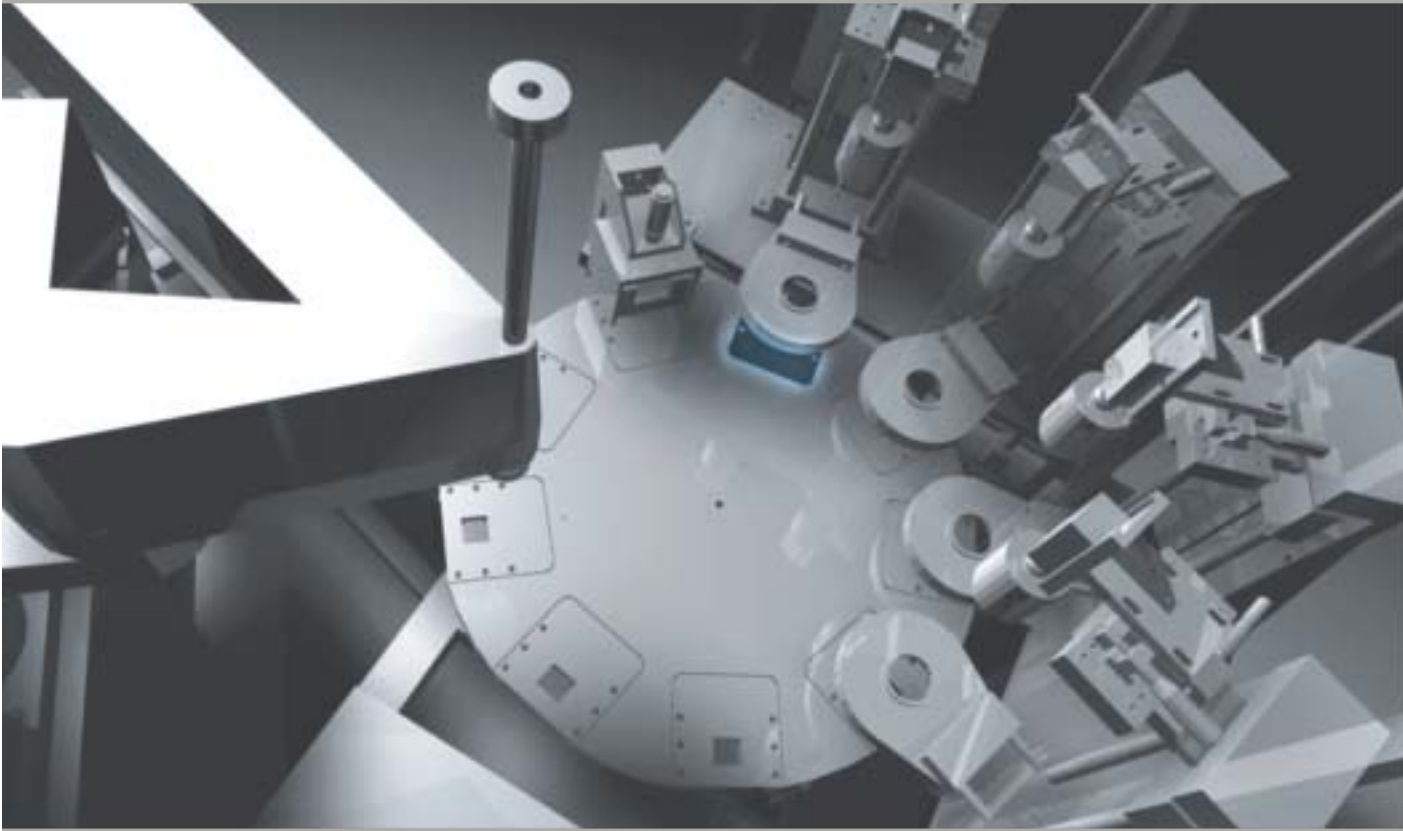
As an ONEX Automation customer, your employees can attend frequent training seminars. These seminars are either free or at a modest charge depending on the nature of the seminar. At these seminars, we help keep your employees up-to-date on technology by introducing them to the latest products in the areas of Robotics, Machine Vision, and Automated Assembly.

**ONEX**  
automation

1207 S. Shamrock Avenue  
Monrovia, California 91016-4244

Telephone 626.358-ONEX (6639)  
Facsimile 626.599-1664

[www.onexautomation.com](http://www.onexautomation.com)



"Quality is never an accident; it is always the result of high intention, sincere effort, intelligent direction and skillful execution; it represents the wise choice of many alternatives, the cumulative experience of many masters of craftsmanship. Quality also marks the search for an ideal after necessity has been satisfied and mere usefulness achieved."

**WILL A. FOSTER**

**ONEX**  
automation



We are big believers in automated inspection, and machine vision is offered as a standard option in each and every ONEX Automation system. Cameras are situated at key points throughout the manufacturing process to identify potential defective parts early on insuring throughput quality.

### **Of Interest to Engineers: Company Capabilities**

ONEX Automation and its technology partners in machine vision evaluate each and every inspection application to ensure feasibility. Important aspects include the determination of proper lighting and optics - key components of a successful machine vision implementation.

We have extensive experience in the following inspection applications:

- Mold Inspection
- Verification of Part Presence/Absence
- Bottle/Container Cap & Label Inspection
- Vision-Guided Robotics
- Gauging/Measuring
- Identification: 1-D Barcode/2-D Matrix Code

### **Of Interest to Managers: Positive Effects on Production**

Machine vision can identify and dramatically help reduce manufacturing defects. Human inspection is often highly subjective with results varying from inspector to inspectors and time of day. Machine vision inspections, on the other hand, are objective, quantifiable, and consistent.

### **Operator Training**

Manufacturers who solely rely on human inspectors are always at their mercy. Finding good inspectors is difficult enough and training them is harder yet. More and more manufacturers are realizing that they simply cannot rely on human inspection to achieve quality standards set by their customers.

### **100% Inspection**

In years past, inspection through sampling was considered adequate. This too has changed. In today's competitive world, 100% inspection is increasingly becoming the norm. ONEX Automation's vision systems can provide this function economically.

### **Of Interest to Executives: Competitive Advantage**

The ability to tell your customers that your products are 100% inspected is a strong selling point. This value added service will attract new contracts and this additional effort will assure customer appreciation and loyalty. Customers look for mature manufacturing practices and quality that has become a standard manufacturing practice.

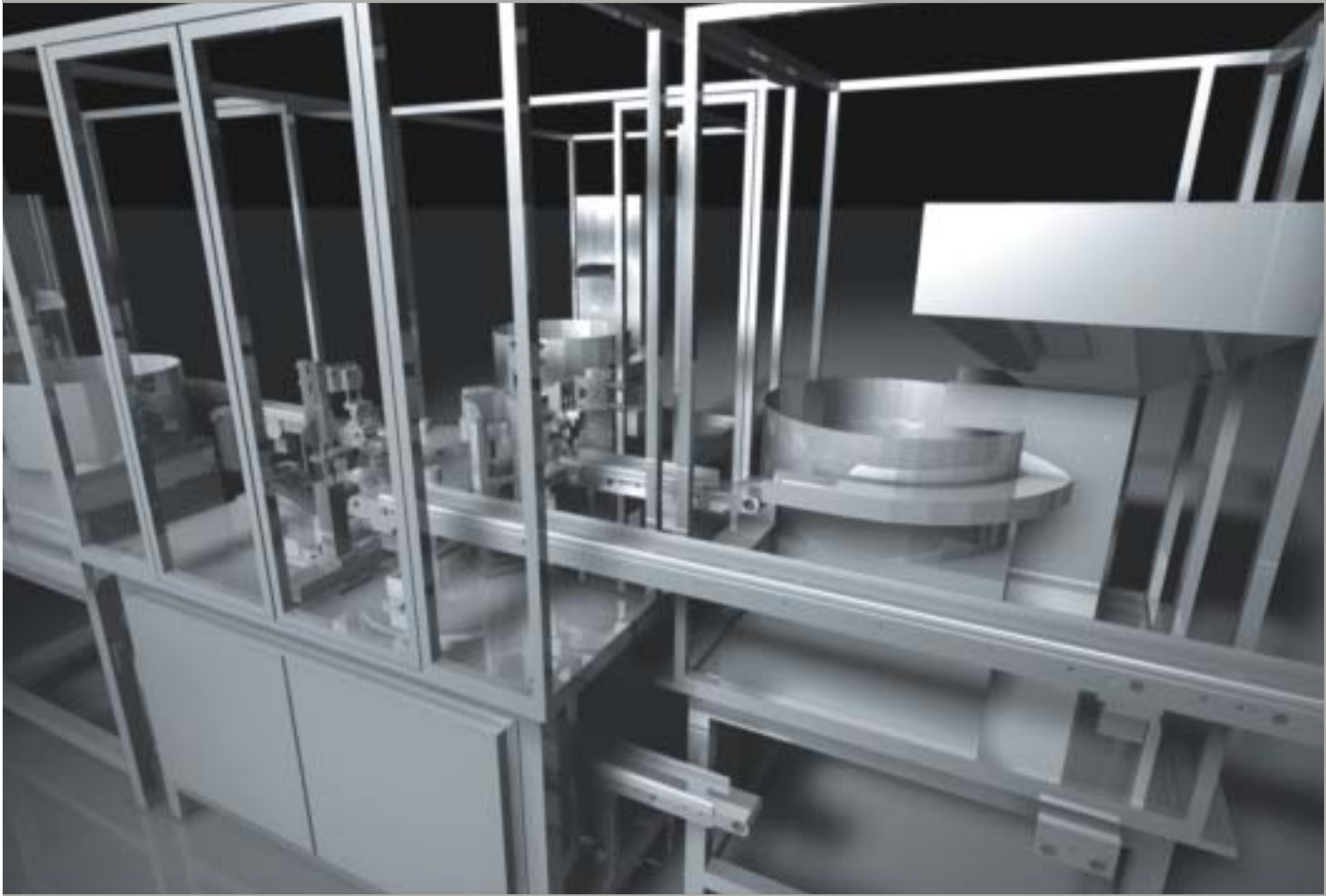
# ONEX

automation

1207 S. Shamrock Avenue  
Monrovia, California 91016-4244

Telephone 626.358-ONEX (6639)  
Facsimile 626.599-1664

[www.onexautomation.com](http://www.onexautomation.com)



"Excellence is an art won by training and habituation. We do not act rightly because we have virtue or excellence, but we rather have those because we have acted rightly. We are what we repeatedly do. Excellence, then, is not an act but a habit."

**ARISTOTLE**

**ONEX**  
automation



ONEX Automation has created a series of standard pre-tested automation modules for use in its automated assembly stations. These modules enable ONEX to rapidly design application-specific stations to meet customer's requirements. Our engineers have experience in both synchronous and asynchronous assembly methods to address a wide range of production requirements.

## **Of Interest to Engineers: Company Capabilities**

As a result of years of experience in the manufacture of automated assembly stations, ONEX Automation has created a series of standard pre-tested automation modules for use in its automated assembly stations. These modules enable ONEX to rapidly design application-specific stations to meet customer's requirements. Our engineers have experience in both synchronous and asynchronous assembly methods to address a wide range of production requirements.

We have extensive experience in the following:

- Custom Assembly Systems
- Material Handling
- Crimping & Staking
- Marking & Stamping
- Dispensing & UV Curing
- Laser Soldering & Etching

## **Of Interest to Managers: Positive Effects on Production**

Automating manufacturing processes increases productivity and reduces costs. Our equipment turns this promise into reality.

### **Reducing the Need (and expense) of Human Labor**

In one instance, the installation of automated assembly equipment allowed one of our customers to reduce their labor requirement from 19 to just 2 operators (representing a 90% labor savings).

### **Increased Production/Output (Lower Costs)**

Another customer reported that they were able to improve their production processes to the point that the quantity of parts previously made in 3 shifts now took only 1 shift to manufacture.

### **Improved Product Quality**

Automated assembly together with machine vision inspection have dramatically improved product quality and, in addition, have allowed customers to identify miss-assembled parts early on in the production process.

### **High Uptime/Low Downtime**

Our quarterly preventative maintenance program is an important factor in helping one of our customers to attain an impressive uptime rate of up to 99.7%.

### **Supervision**

Reliable automated systems designed and manufactured by ONEX Automation are your key to reliable and consistent manufacturing.

## **Of Interest to Executives: Competitive Advantage**

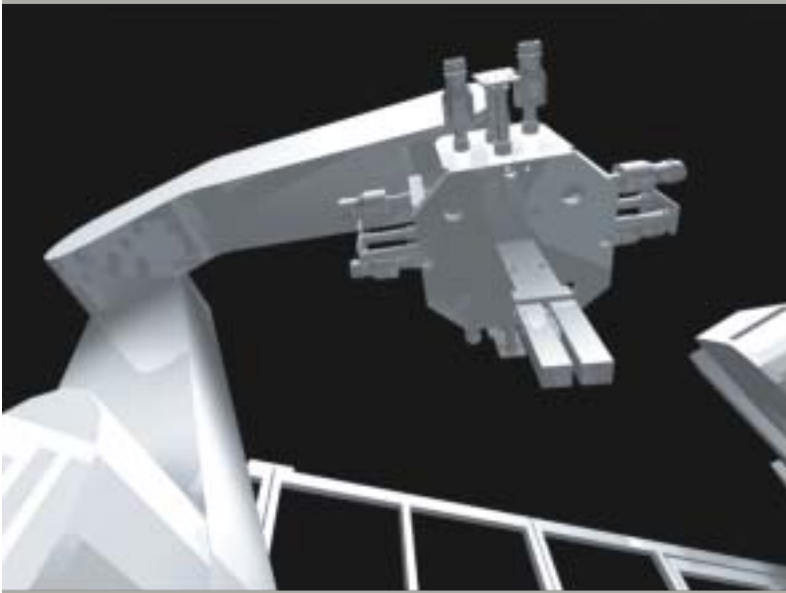
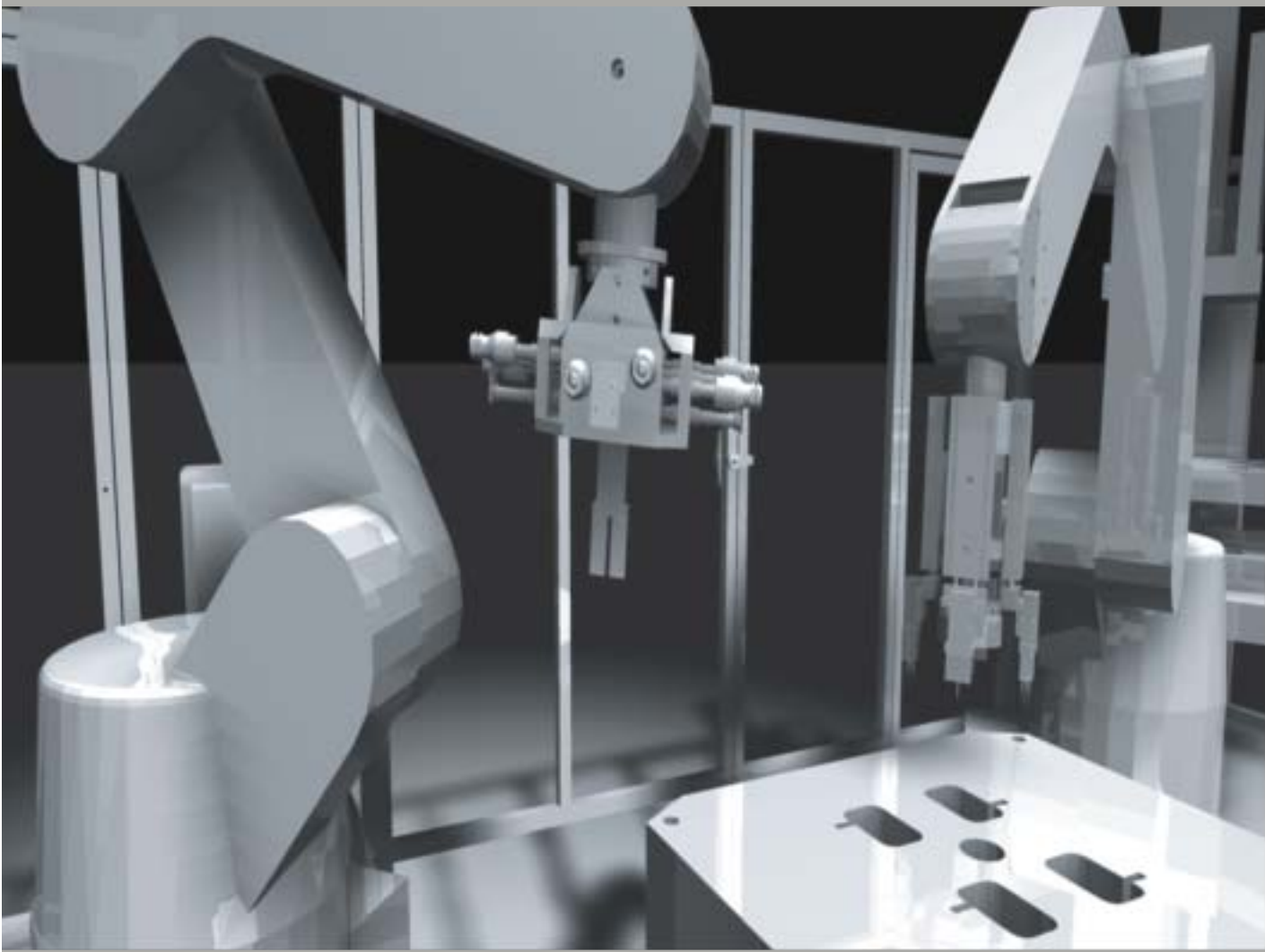
Automation will enable your company to be more competitive in increasingly demanding global markets. Cost savings in improved efficiency and product quality will allow your company to attract quality and price-conscious customers. Partnering with ONEX Automation as your solution provider will give you the ultimate competitive edge.

# ONEX automation

1207 S. Shamrock Avenue  
Monrovia, California 91016-4244

Telephone 626.358-ONEX (6639)  
Facsimile 626.599-1664

[www.onexautomation.com](http://www.onexautomation.com)



"Creative thinking is today's most prized, profit - producing possession for any individual, corporation or country. It has the capacity to change you, your business and the world."

**ROBERT P. CRAWFORD**

**ONEX**  
automation



Robots are Flexible and Reusable - Typically Robot equipment makes up to 20-25% of the near cost of an automation cell. While most product life cycles are up to 5-7 years. Robot useful life spans 2 decades making it re deployable over and over. Robots provide the ultimate in flexibility, enabling the manufacturer to process new parts or products through the same assembly line requiring a simple software and/or EOT change.

**Of Interest to Engineers:** Company Capabilities  
ONEX Automation has experience in working with a wide range of robot types including Cartesian Coordinate (XYZ), SCARA and Articulated Arm (6-axis). ONEX has also developed standard robot cells that can be used individually, serially, or in parallel with each other to meet your application and throughput requirements.

We have extensive experience in the following robotic applications:

- Injection Mold Loading & Unloading
- Parts Handling and Tray Loading
- Vision Guided Robotics (Smart Feed Systems)
- High-Speed Assembly Using Linear Motors

**Of Interest to Managers:** Positive Effects on Production  
Financially, robots are now within reach of even the smallest companies. Finally, robots are more reliable, easier to operate and more economical to maintain than ever before.

There are certainly other benefits to utilizing robots:

#### Robots can do the Work that Humans can't (or Won't) Do and Robots Don't Get Tired

Some operations require a level of detail that humans simply cannot maintain over long periods of time. Fatigue sets in and quality quickly drops. The concept of turning off the factory's lights while continuing to produce parts is now a reality since Robots don't get tired and don't take breaks.

#### Repetition Breeds Boredom and Risks of an Operator Injury

Repetitive tasks tend to make operators complacent and careless in a very short amount of time. Repetitious work can also be very expensive in terms of workers injury and workman's compensation claims. Last years Injury Claims could very well be this years budget for Robotic Automation.

#### Consistency

Flexible Automation, utilizing robots, machine vision, and sensors is very reliable and results in a high-level of parts/product consistency and uniformity from lot to lot, shift to shift.... etc.

**Of Interest to Executives:** Competitive Advantage  
Robots in your process will portray your company as a modern, progressive, and forward-thinking organization. Just the kind of company your customers are seeking. Investment and experience in robotics automation demonstrates your commitment to product quality, the ability to accommodate increased production demands, and your ability to handle new parts designs and product changes. In the end, who would you rather have these capabilities? You or your competitors?

# ONEX

automation

1207 S. Shamrock Avenue  
Monrovia, California 91016-4244

Telephone 626.358-ONEX (6639)  
Facsimile 626.599-1664

[www.onexautomation.com](http://www.onexautomation.com)



1207 S. Shamrock Avenue  
Monrovia, California 91016-4244

Telephone 626.358-ONEX(6639)  
Facsimile 626.599-1664

[www.onexautomation.com](http://www.onexautomation.com)